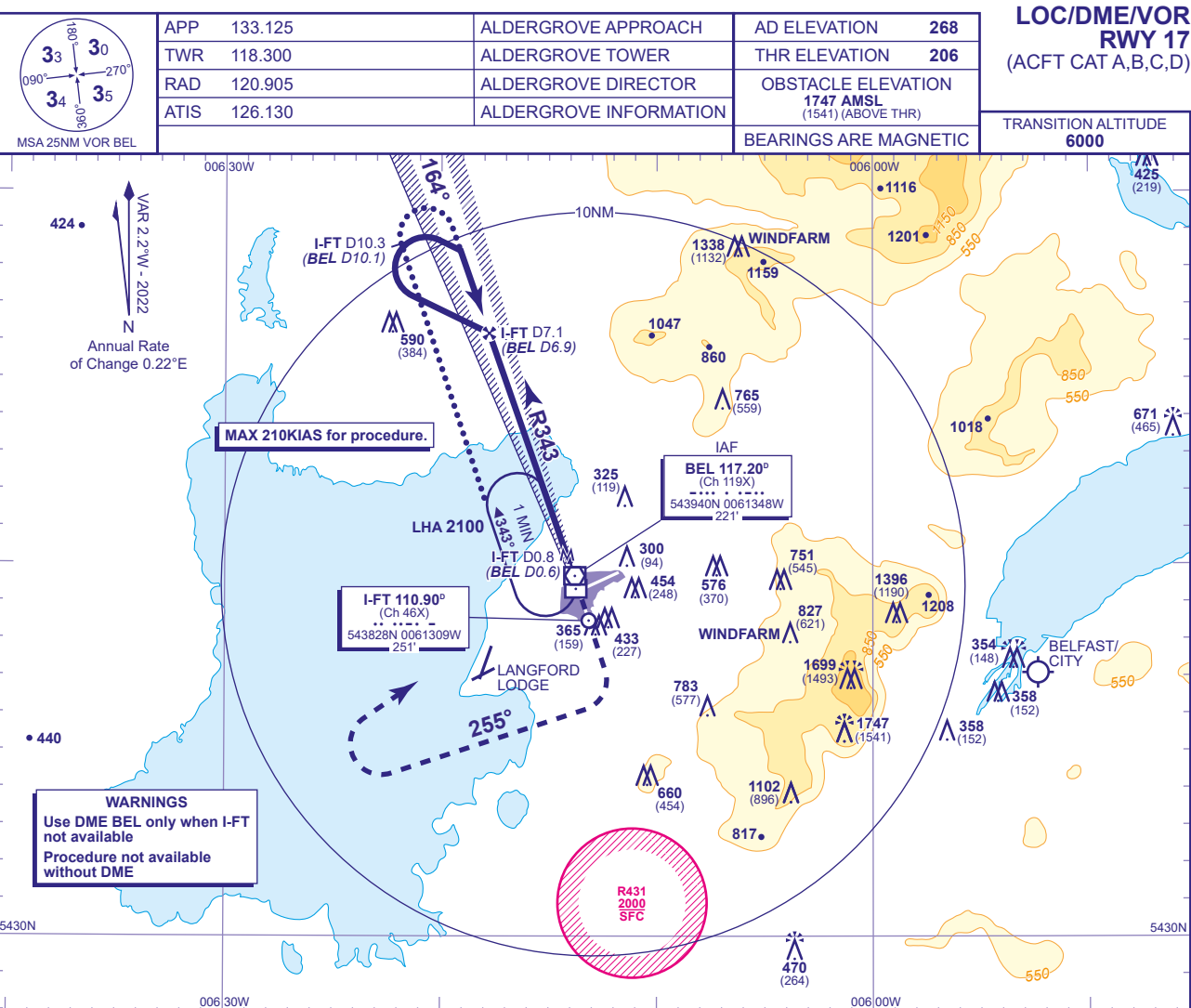
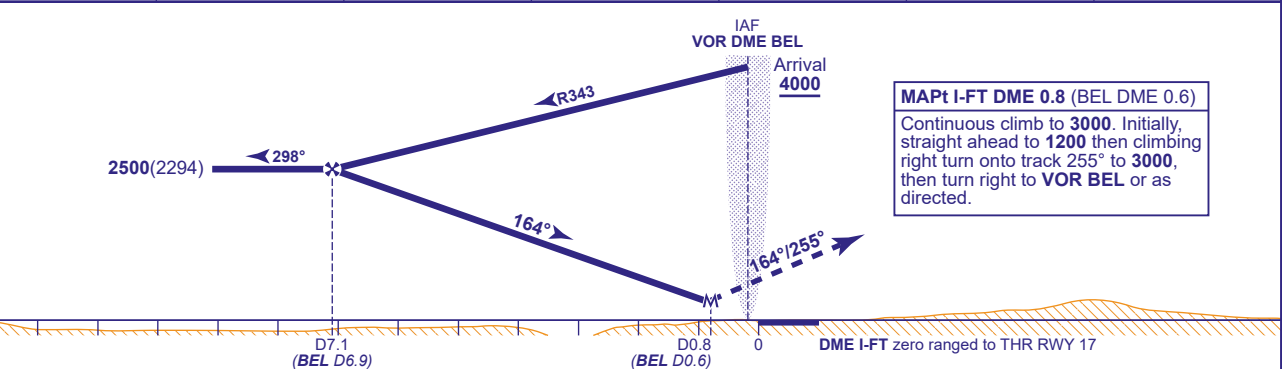


INSTRUMENT APPROACH CHART - ICAO

BELFAST ALDERGROVE  
LOC/DME/VOR  
RWY 17  
(ACFT CAT A,B,C,D)



RECOMMENDED PROFILE Gradient 5.24%, 318FT/NM						
DME I-FT (BEL)	6(5.8)	5(4.8)	4(3.8)	3(2.8)	2(1.8)	1(0.8)
ALT(HGT)	2170(1964)	1850(1644)	1530(1324)	1210(1004)	890(684)	570(364)



Aircraft Category		A	B	C	D	Rate of descent	G/S KT	160	140	120	100	80
OCA (OCH)	Procedure	500(294)	500(294)	500(294)	500(294)		FT/MIN	850	740	640	530	420
VM(C)OCA (OCH AAL)	Total Area	750(482)	840(572)	1180(912)	1290(1022)							

ALTERNATIVE PROCEDURE EXTENDED HOLDING PATTERN  
Overhead VOR BEL (IAF) extend outbound leg of holding pattern descending to 2500(2294). At I-FT DME 10.3 (BEL DME 10.1) turn right to establish on LOC inbound, then continue as for main procedure.

NOTE Aircraft will normally be required to hold not lower than 3000 at VOR BEL.

CHANGE (5/25): NW MSA INCREASE. OCA(OCH).